

**1. Q: How could I enable 3D feature on Asrock Vision 3D and ION3D system?**

**A:** Different monitor/TV/content/playback software may have different settings.

We use below for example:

**3D TV:** Samsung UA46C7000WM 46"

**Play back software:** Power DVD10 v10.0.2025.52

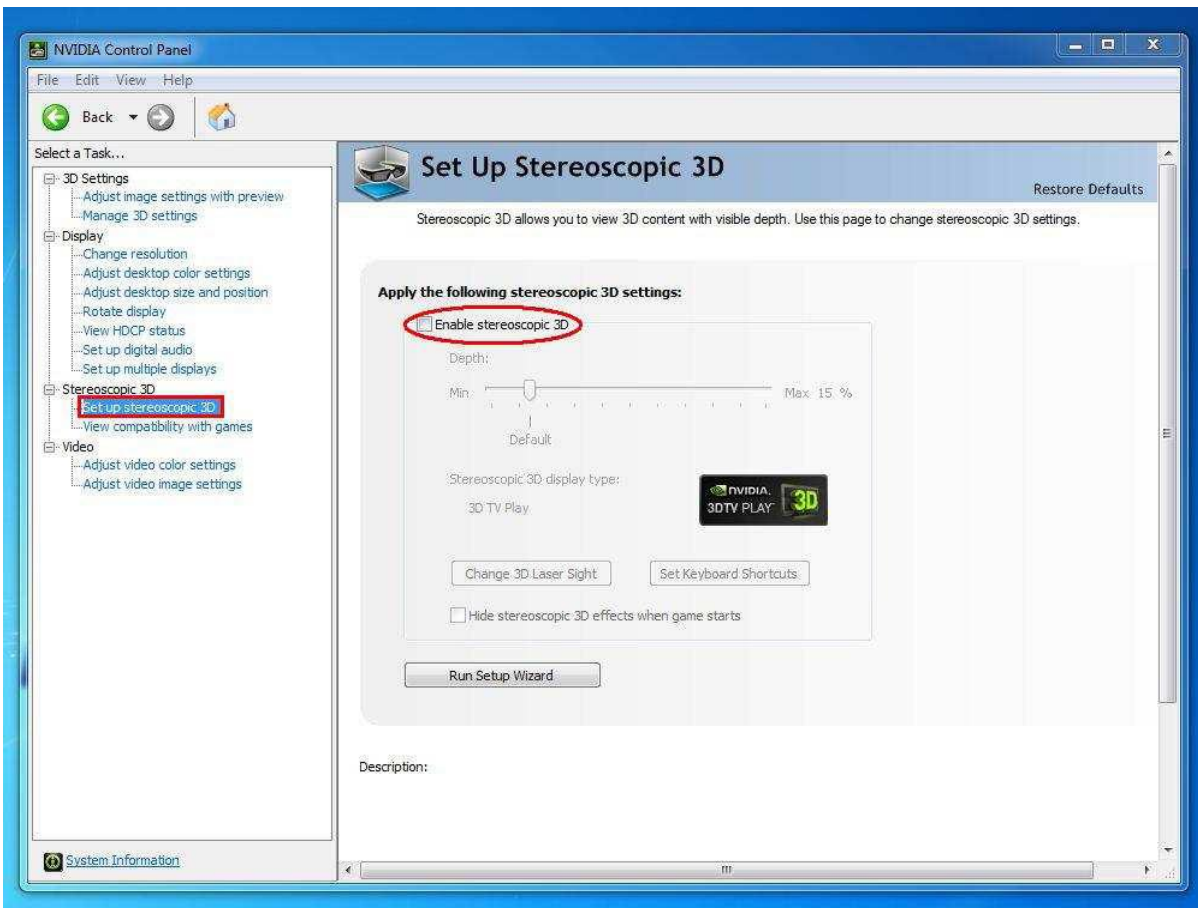
**Play back content:** Step UP 3D blu-ray

**1. Please follow below steps to setup under OS.**

A. Please install all drivers on SCD before following steps in this setup guide.

B. Please right click on desktop, and enter NVIDIA Control Panel.

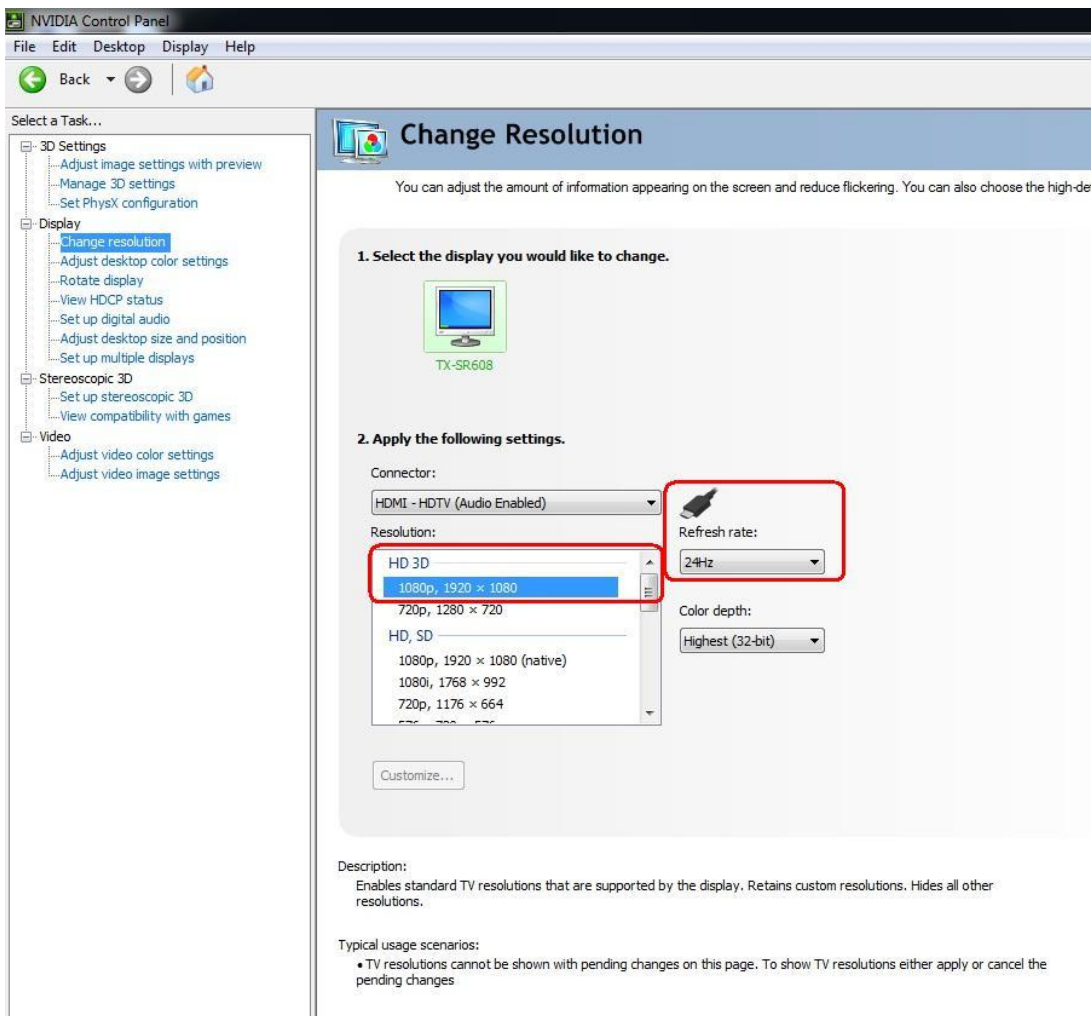
C. Select "Setup Stereoscopic 3D task" in NVIDIA Control Panel, and check to "Enable Stereoscopic 3D"



D. If it's the first time for you to setup 3D feature, the system may lead you to run Setup Wizard. Please follow the instruction and finish the Setup Wizard.

E. After finishing the Setup Wizard, please enter Display > Change Resolution, set the resolution to "HD, 3D" with proper solution and "Refresh rate".

We set it as "1080p" and 24Hz during our tests.

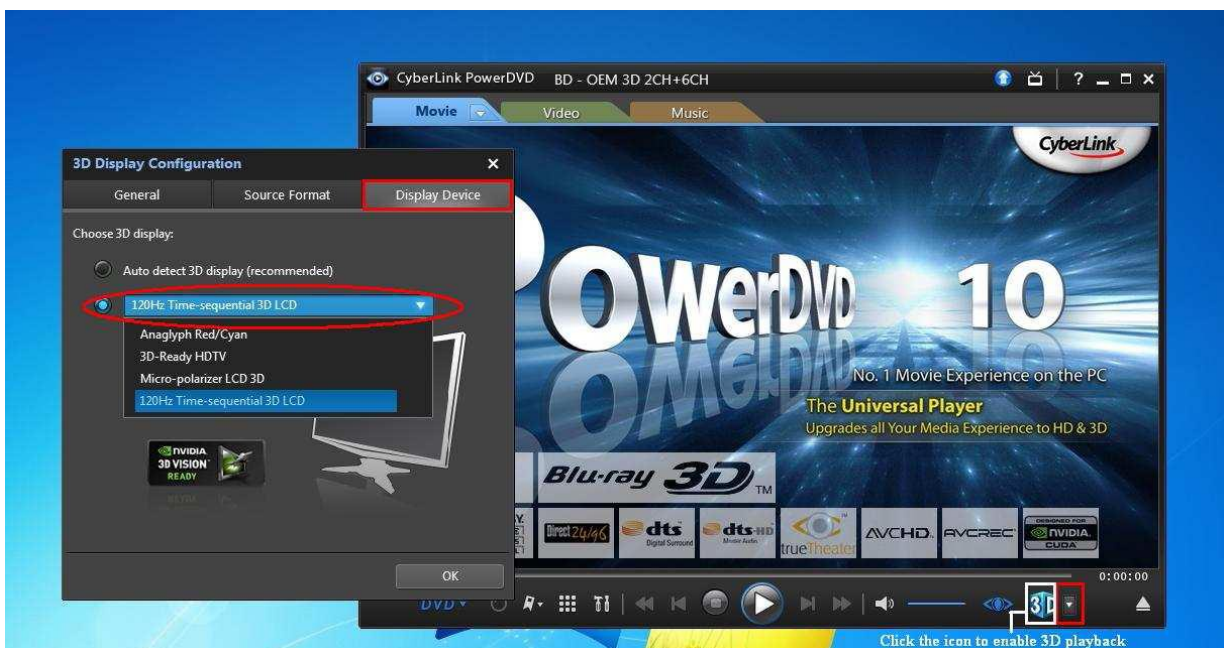


F. Click "Apply" to save the changes.

## 2. Please follow below steps to setup your PowerDVD10

A. Click on the arrow right next to the "3D" icon on PowerDVD10 to start 3D Display Configuration.

B. Set the proper type of your monitor / TV in Display Device. As shown in picture below, we select 120Hz Time-sequential 3D LCD for example.



\* Note: Please note that different monitor/TV/content may have different settings; please check user manuals of

your monitor / TV/content for further details.

C. Then you can play the 3D content.

**2. Q: How to setup digital sound (DTS5.1, Dolby5.1, DTS HD Master and Dolby True HD) output via HDMI or SPDIF?**

**A: Requirements:**

- OS: Windows7, Vista SP2 or later.
- Receiver / decoder: Onkyo TX-SR608 amplifier for example:
- Playback software: for example Power DVD10 v10.0.2025.52 or other playback software.

Setup:

1. Please install all drivers from support CD, after that please check device manager, there should be no any "!" or "?" on list.

2. Please enter Control Panel > Hardware and Sound > Sound,

If you would like to output via HDMI, please select [HDMI output]

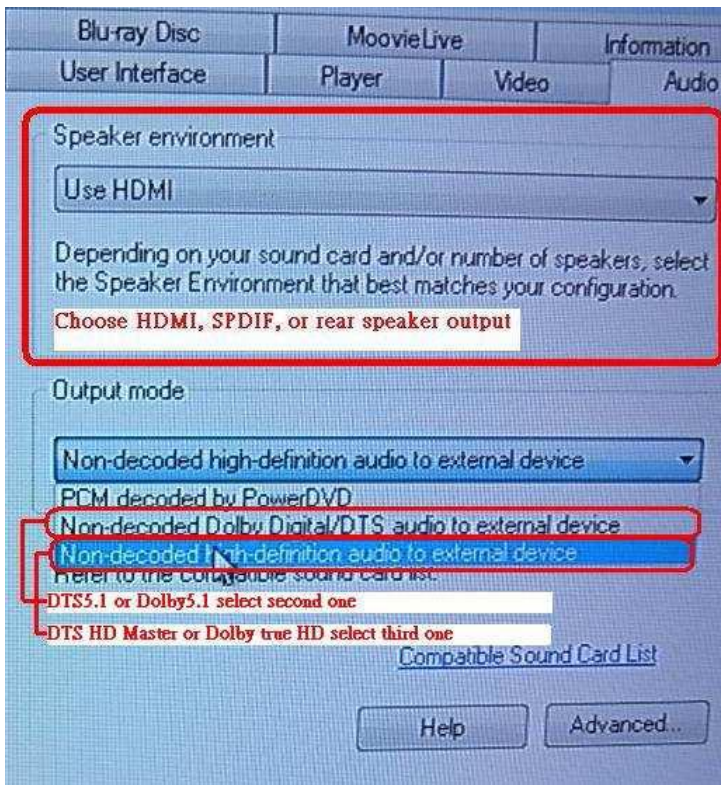
If you would like to output via SPDIF, please select [Digital output]



\*Different motherboard/chipset may show different information, above picture is for references only.

3. Enter the Audio settings in your application.

We take Power DVD 10 here for example: Choose the Speaker environment and Output modes as you want.



4. Set your decoder/amplifier to the digital sound output, which you want.
5. Set the correct output format on your content /source manual.



6. Then you can play the content/source.

3. Q: If my mouse or keyboard works abnormally under BIOS, how do I solve this problem?

A: Please kindly update the latest BIOS from below link or beta BIOS from Beta Zone for testing.

BIOS download link: <http://www.asrock.com/support/download.asp>

4. Q: How to pre-install the SATA RAID driver on X79 chipset motherboard?

A: Step1:

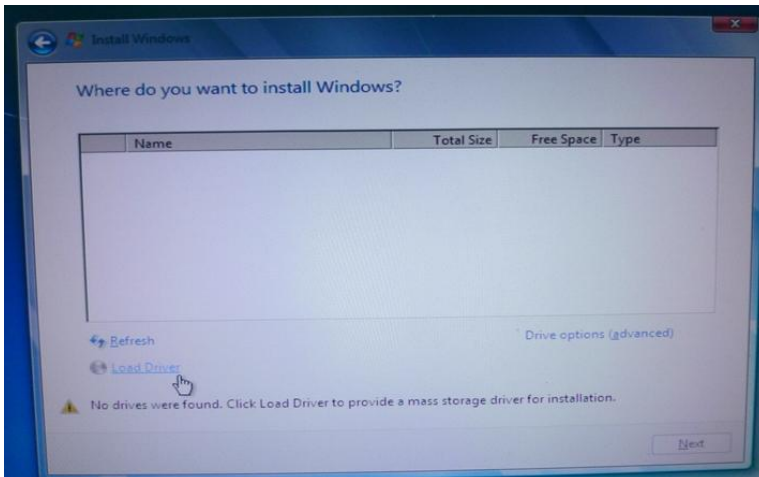
[http://download.asrock.com/drivers/Intel/SATA/Floppy\\_Win7-64\\_Win7\\_Vista64\\_Vista\\_XP64\\_XP\(v3.0.0.2003\).zip](http://download.asrock.com/drivers/Intel/SATA/Floppy_Win7-64_Win7_Vista64_Vista_XP64_XP(v3.0.0.2003).zip)

Step2:

Please unzip the SATA RAID driver which downloaded in Step1 and put the SATA RAID driver in USB flash drive.

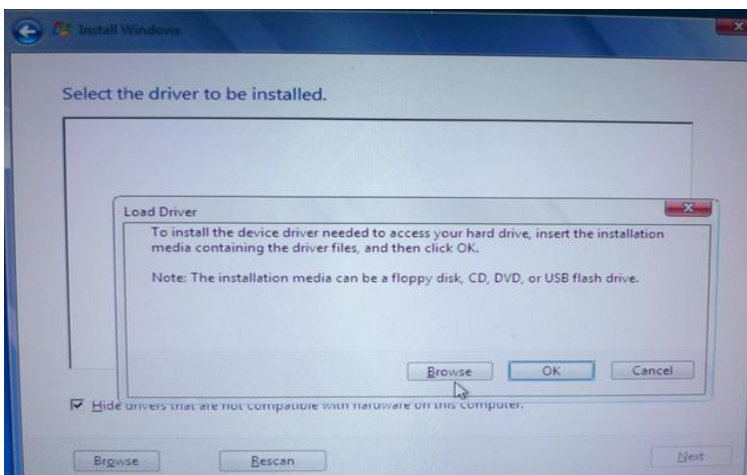
Step3:

Please click "Load Driver" when selecting hard drive in Windows installation.



Step4:

Click "Browse"

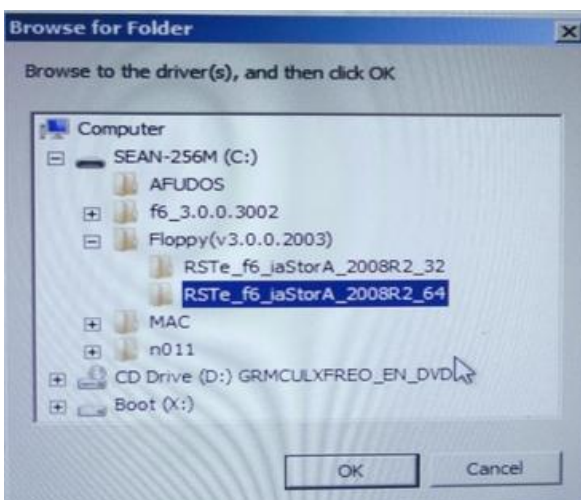


Step5:

Choose the folder downloaded in Step1.

RSTe\_f6\_iaStorA\_2008R2\_32 is used for 32-bit operating system.

RSTe\_f6\_iaStorA\_2008R2\_64 is used for 64-bit operating system



Step6:

Select the SATA RAID driver for "Intel(R) C600 Series ...." as below picture and click next to install the OS.

