

1. Q: Does my ASRock Intel 6-series motherboard support Intel Ivy Bridge CPU?

A: For support Intel next generation 22nm CPU, it required correspond BIOS version, drivers, and AXTU update. Please follow below steps to update correspond BIOS, drivers, and Utilities.

Step 1: Check BIOS version.

Please check below table and update BIOS since or higher version.

If you have the same or a higher BIOS version on your motherboard, there is no need to update the BIOS and you can skip step 2

H61 Motherboard Support List and Download Section

Model	BIOS Version	Driver and Utility
H61M-VS R2.0	P2.10	Download
H61M-HGS	P1.50	Download
H61M-HVS	P1.90	Download
H61M-HVGS	P1.70	Download
H61M/U3S3	P1.70	Download
H61M-ITX	P1.60	Download
H61iCafe	P1.70	Download
H61DE/S3	P1.70	Download
H61DE/SI	P1.70	Download
H61M-PS	P1.40	Download
H61M	P1.70	Download
H61DEL	P1.70	Download
H61M-GE	P1.70	Download
P65iCafe	P1.40	Download
H61M-VS	P2.10	Download
H61M-S	P1.50	Download
H61M-GS	P1.50	Download

Z68 Motherboard Support List and Download Section

Model	BIOS Version	Driver and Utility
Fatal1ty Z68 Professional Gen3	P2.10	Download
Z68 Extreme3 Gen3	P2.10	Download
Z68 Extreme4 Gen3	P2.10	Download

Z68 Extreme7 Gen3	P2.10	Download
Z68 Pro3	P2.10	Download
Z68 Pro3 Gen3	P2.10	Download
Z68 Pro3-M	P2.10	Download
Z68M/USB3	P2.10	Download
Z68M-ITX/HT	P2.20	Download
Z68 Extreme4	P2.20	Download

P67 Motherboard Support List and Download Section

Model	BIOS Version	Driver and Utility
Fatal1ty P67 Performance	P2.10	Download
Fatal1ty P67 Professional	P3.10	Download
P67 Extreme4	P3.10	Download
P67 Extreme4 Gen3	P2.10	Download
P67 Extreme6	P2.10	Download
P67 Pro	P2.10	Download
P67 Pro3	P3.10	Download
P67 Pro3 SE	P2.10	Download

H67 Motherboard Support List and Download Section

Model	BIOS Version	Driver and Utility
H67DE3	P2.10	Download
H67M	P2.10	Download
H67M-GE	P2.10	Download
H67M-GE/HT	P2.10	Download
H67M-ITX	P2.10	Download
H67M-ITX/HT	P2.10	Download

There are two ways to check BIOS version.

1 Boot up your system and press [F2] or [Delete] when ASRock boot logo showing up, you can find the BIOS or UEFI version in the main screen as below.



2 Or find the sticker on BIOS ROM chip as below, you can check which BIOS version implemented when motherboard produced.



Step 2: Updating the BIOS

A), If you have a Sandy Bridge CPU or if you can borrow one from a friend then you can easily update the BIOS yourself.

Please download BIOS from above table, and update BIOS.

For further instructions please click on the "How to update" icon in the corresponding row.



B), If you do not have a Sandy Bridge CPU and you cannot borrow it, please contact the dealer where you bought from to update the BIOS for you.

That is the second fastest option to get your board to support the Ivy Bridge CPU.

If that is not possible then please contact ASRock Technical Support for further help.

*Note: If you use a USB flash drive to update BIOS, after new BIOS image has been written to the chip, please press any key to restart system. At this moment, please do not remove the USB flash drive. Intel ME firmware update procedure will proceed automatically if it is required.

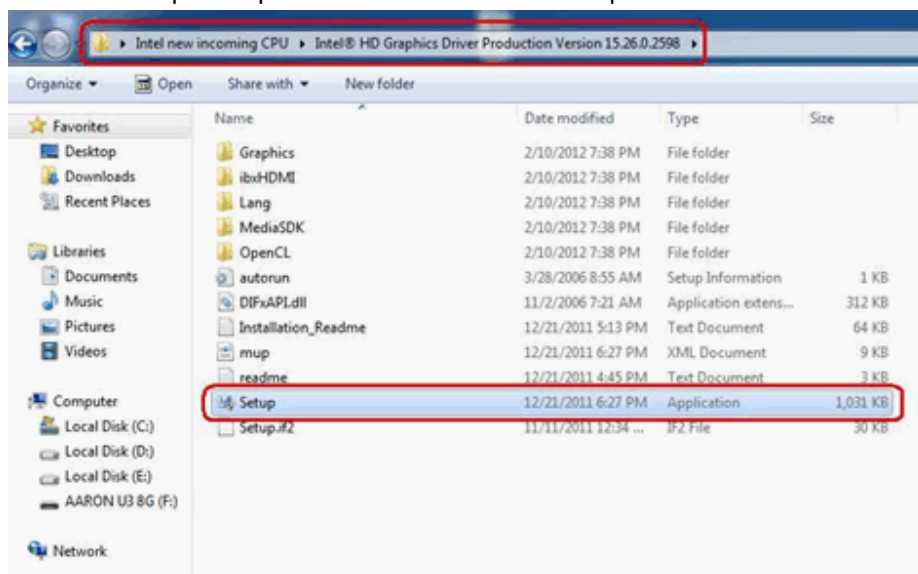
**Note: Please only use the BIOS image offered on ASRock website.

Step 3: Update suitable Intel HD graphics driver from ASRock website

<http://www.asrock.com/support/download.asp>

**How to update Intel HD graphics driver:*

1. Please unzip and open the folder to execute "setup".



2. Follow Intel driver installer to install the graphics driver.

3. After the installation has finished you will see below message, please restart your system at this moment.



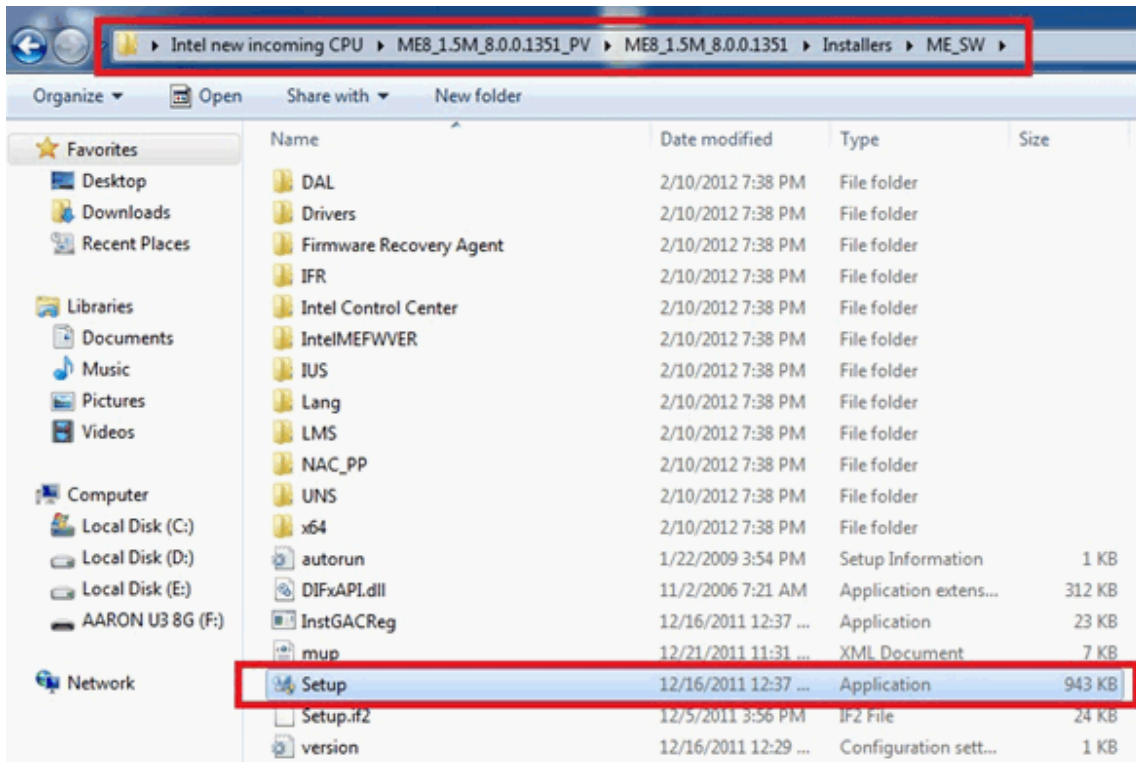
Step4: Install the correct version of Intel Management Engine from ASRock website:

<http://www.asrock.com/support/download.asp>

**How to update Intel Management Engine:*

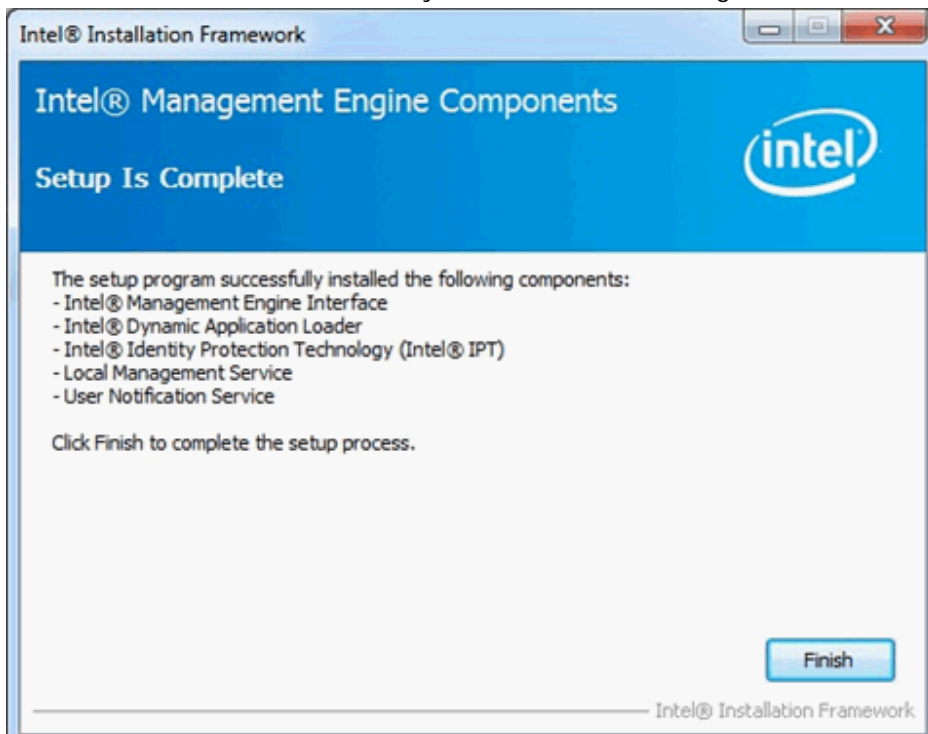
1. Please unzip and open the folder to execute "setup".

Route: Enter Intel ME8 folder-> ME8_1.5M_8.0.0.1351-> Installers-> ME_SW-> Choose "Setup".



2. Follow Intel driver installer to install the ME driver.

3. After the installation has finished, you will see below message. Please click on "Finish".



Step 5: Install Intel Smart Connect driver for Microsoft Windows7/7 64 bit. OS.

<http://www.asrock.com/support/download.asp>

Step 6: Update ASRock AXTU Utility.

Please update new AXTU version on ASRock website: <http://www.asrock.com/support/download.asp>

Step 7: Replace CPU to Intel Ivy Bridge.